

Name _____

Still Alice by Lisa Genova

Find the clinical definition of Early Onset Alzheimer's:

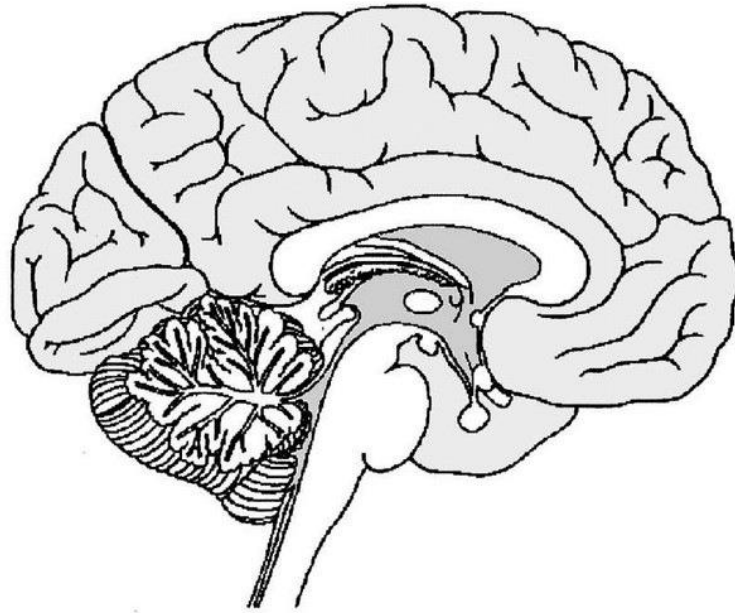
Make a list of the first symptoms/events that Alice notices in the course of the book that give her the idea that something is not right:

What are some of the suggestions that the neurologist makes to Alice and her husband to make everyday life a little easier for her?

What is Alice's job? Where does she work? What does her research involve?

Is early onset Alzheimer's genetic? What do Alice's children do to determine the likelihood of inheriting the disease?

Label the parts of the brain on the diagram below and list each one with its function.



Cerebellum

Frontal lobe

Parietal Lobe

Temporal Lobe

Occipital Lobe

Pons

Medulla Oblongata

Spinal Cord

Cerebrum

Brain stem

What is a synapse? How does it work in the brain?

What is amyloid-beta 42? What does it do for the human brain? What happens to amyloid-beta 42 in Alzheimer's patients?

What is your favorite part of the book?

Are any of the drug treatments mentioned in the book, actual treatments for patients with Alzheimer's? If so, which ones and what are they supposed to do?